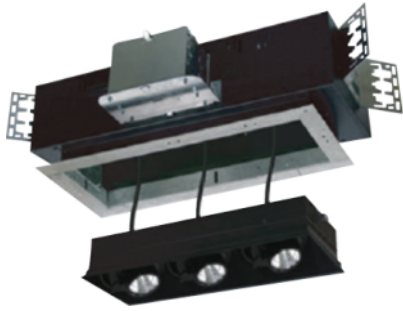


MCLD 3LN / Trimless

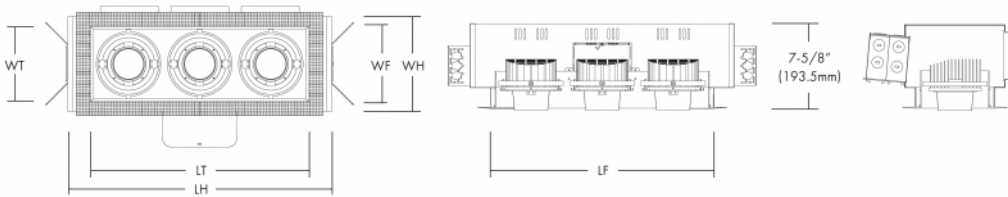


Catalog

Project

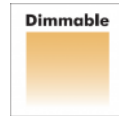
Type

Date



No. of Lamps	Housing WH(Length) x LH(Width)	Trim WT(Length) x LT(Width)	Frame Opening WF(Length) x LF(Width)	Ceiling Cut-Out WC(Length) x IC(Width)
1LM	8-9/16" X 8-5/8" (218mm X 218.6mm)	6-3/4" X 6-15/16" (171mm X 174.6mm)	7-1/16" X 7-5/16" (179.5mm X 185.6mm)	7-1/2" X 7-9/16" (190.5mm X 192.1mm)
2LM	8-9/16" X 16-1/8" (218mm X 409.1mm)	6-3/4" X 13-5/16" (171mm X 337.6mm)	7-1/16" X 13-3/4" (179.5mm X 348.5mm)	7-1/2" X 13-15/16" (190.5mm X 354.0mm)
3LM	8-9/16" X 23-13/16" (218mm X 603.6mm)	6-3/4" X 19-11/16" (171mm X 500.6mm)	7-1/16" X 20-1/8" (179.5mm X 511.6mm)	7-1/2" X 20-3/8" (190.5mm X 517.5mm)
4LM	8-9/16" X 30-5/8" (218mm X 776.6mm)	6-3/4" X 26-1/8" (171mm X 663.6mm)	7-1/16" X 26-9/16" (179.5mm X 674.6mm)	7-1/2" X 26-13/16" (190.5mm X 681mm)

Technical Data



The N-Series of Multiple Cluster, LED Recessed Downlights are part of the MCL family and are designed with state-of-the-art LED and driver technology. All of the MCLD N-Series models feature high end, Architectural Spec quality with the energy efficiency and all the advantages of a LED source. The N-series are for new construction and are offered in 1 to 4 lamp versions. Equivalent to MCL PAR20 / MR16 size housings.

Design Features

Housing

- Non-IC rated new construction housing available in single lamp through 4 lamps models
- Designed for easy accessibility from below ceiling.

Trimless

- Adjustable perforated mesh for Trimless Drywall Mud Framing in drywall/plaster ceilings. Allows for mud compound to be applied for a clean, trimless look.

Junction Box

- Listed, through branch circuit wiring
[max.8 No 12AWG 90° Branch circuit conductors (4in, 4out)]

Thermal Protector

- Dedicated 120V and 277V Self-Resetting thermal sensors on J-box deactivates fixture if overheating occurs due to electrical issues, improper insulation, and/or high ambient temperatures.

LED Engine

- 1, 2, 3 or 4, 15W and 20W LED heads with 80 CRI in 3000K, 3500K and 4000K color temperatures. Mounted on a heat sink and adjustable up to 45°(length) x 45°(width) and lockable into positions in multiple directions.

LED power supply driver

- High efficiency driver with +90% power factor for universal 120V-277V, 60Hz, 0-10V dimmable driver. Installed on junction box door for easy access from below ceiling. Meets UL class 2, FCC47CFR class B.

Mounting

- Designed for new construction mounting with channel bracket kit, provides 5" vertical adjustments and accommodates 1/2" EMT conduit. Options include HB-24 and HBC-24 bar hangers or lathing channels for T-bar grid or concealed spline ceilings.

Warranty

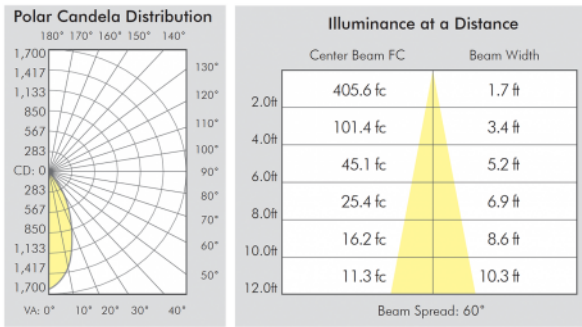
- LED Module: 5 years/50K hours
- Product/Driver: 3 years

Listing

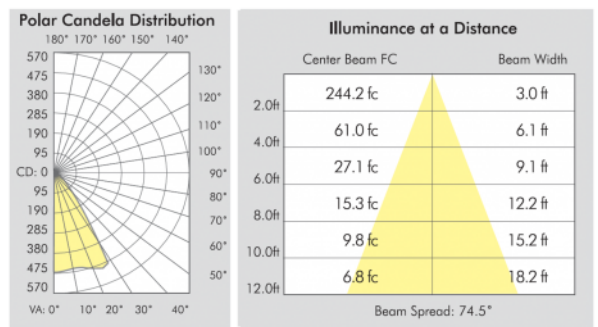
- cCSAus Damp Location

SPECIFICATION			
LED Quantity	1 EA (COB)		
Input Voltage	120-277V AC		
Wattage 15W (+/-5%)	15W	14.9W	14.9W
Type	N	M	W
Lumen (+/-5%)	1,067	1,050	1,075
Efficacy (LPW)	71.1	70.5	72.2
Beam Angle	28°	36°	60°
Wattage 20W (+/-5%)	22.6W	22.4W	22.4W
Type	N	M	W
Lumen (+/-5%)	1,997	1,917	1,926
Efficacy (LPW)	88.4	85.6	86.0
Beam Angle	28°	36°	60°
CRI (Typical)	80		
CCT (Color +/-5%)	3000K, 3500K, 4000K		
Lamp Life	50,000 hr		

Photometric Report



MCLD-15W-Wide



MCLD-20W-Wide

Ordering Information

Model	No. Of LED Heads	Watts	CRI	Color Temp.**	Driver	Beam Angle	Trim Insert	Trim Interior Finish**	Option
MCLD = 120V or 277V LED Multiple Cluster Recessed Downlight	-1LN = (1) Light	-15 = 15W	-8 = 80	30 = 3000K	Z = 120-277V, with Triac, ELV & 0-10V 1% Dimming L1D = Lutron Hi-lume 1% Dimming L5D = Lutron EcoSystem 5% Dimming	N = Narrow 28° M = Medium 36° W = Wide 60°	OL = 0.75" Trim Flange TL = Trimless	-WW = White with White Flange -BW = Black with White Flange -SW = Silver with White Flange	-SNT = Snoot -LVR = Louver -HCL = Hex Cell Louver -LSN = Linear Spread Lens -LNS = UV Lens -ML = Milk White Lens
	-2LN = (2) Light	-20 = 20W	-9 = 90	35 = 3500K					
	-3LN = (3) Light			40 = 4000K					
	-4LN = (4) Light								

Examp**l** MCLD-1LN-815-30ZTD1M

OL-BW-SNT

** Consult factory for other Color Temperatures and Finishes